



Tradewind VA



Flight Briefing Package

TCC909B CYUL-KATL

20-Aug-2022 #1

RELEASE #1

PIERRE ELLIOTT TRUDEAU INTL
(CANADA)

-

HARTSFIELD - JACKSON ATLANTA I
(UNITED STATES)

PREPARED BY CHRISTIAN BREUER (TCA2984)

CHRISTIAN@TCA-CHARTER.DE

20 AUG 0927 UTC

TCC909B CYUL-KATL (20-Aug-2022) #1

TRADEWIND CARIBBEAN FLIGHTPLAN - IFR TCC909B PJTGD CYUL-KATL

 ALL WEIGHTS IN KILOGRAMS (KG) STD 20AUG/1205Z

OPF 1 - PREPARED 20AUG/0927Z BY CHRISTIAN BREUER (TCA2984) CHRISTIAN@TCA-CHARTER.DE

TR909B/TCC909B PJTGD/B777-2LR GE SEL/EFAD ROUTE: CYULKATL01

DEP: CYUL/YUL 24R ELEV 118 FT COST INDEX: 250 TTL G/C DIST: 865 NM
 ARR: KATL/ATL 08L ELEV 1026 FT INIT ALT: FL400 TTL F/P DIST: 919 NM
 FUEL BIAS: 102.5% TTL AIR DIST: 982 NM
 AVG WIND CMP: HD029 KT

ALT: KMEM/MEM 18L ELEV 341 FT 304 NM

CONFIG	DOW	PAX	CARGO	TOTAL	ULOAD LIM	ZFW	TOW	LDW
STANDARD	156746	0	0	0	52360 ZFW	MAX 209106	264935	223167
						PLN 156746	182106	168817
						ACT

 ** TAKE-OFF DATA CYUL 24R **

COND: 182106 KG // RWY DRY // +20•C Q1019 230/06 // LMT: STRUCT
 CONFIG: FLAPS 5 // D-T02 +68C // A/I OFF/AUTO // A/C ON
 SPEEDS: V1=120 VR=135 V2=135
 ENG OUT: AT R 180 'YUL' 116.30 RT TO 'YUL' 116.30 (090 INBD,LT)

	FUEL	CORR	ENDUR	
TRIP	13289	02:10	
CONT 5%	664	00:07	
ALTN KMEM	5197	00:49	
FINAL RESV	2660	00:30	
HOLD	1767	00:20	
ADD FUEL	458	00:05	
MIN T/O	24035	04:01
EXTRA	1325	00:15	CAPTAINS SIGNATURE (....)
TAXI	1005	00:15	
RELEASE	26365	04:31	I ACCEPT THIS OPF AND I AM FAMILIAR
ARR FUEL	11401	01:57	WITH THE PLANNED ROUTE AND AERODROMES

FUEL TANK CAP 162613 KG / MAX EXTRA FUEL 55675 KG LIM BY LDW
 TRIP CORR FOR 3000 KG TOW INCR: +122 KG / 3000 KG TOW DECR: -255 KG
 2000 FT LOWER: +294 KG / EET 02:09 CLB: 250/310/84 DES: 84/320/250

CYUL	STD 12:05Z/08:05L	ETD 12:05Z	ACT OFBL	EST T/O 12:20Z	ACT T/O
KATL	STA 14:55Z/10:55L	ETA 14:40Z	ACT ONBL	EST LDG 14:30Z	ACT LDG
	SKD 02:50	PLN 02:35	TTL BLCK	EST FLT 02:10	TTL FLT

ATC ROUTE: N0491F400 DCT FAWNS DCT BUGSY DCT SYR DCT PSB Q71 GEFES DCT HVQ DCT
 HLRRY ONDRE1

ALTERNATE PLANNING

ALTN/RWY	DIST	ALT/FL	MSA	COMP	TIME	FUEL	DIFF	ROUTE

TCC909B CYUL-KATL (20-Aug-2022) #1

KMEM/18L 304 FL430 051 HD032 00:49 5197 - VUZ

MOST CRITICAL MORA 9000 FT AT PUPDG

AWY -FIR	WAYPOINT NAME	MT	ALT	MSA ISA	FREQ WND/SPD	TAS GS	LEG REM	FUEL REM / USED POSITION	LEG ETO / ATO	ACC
	CYUL/24R PIERRE ELLIOTT TRUDE		118	028				25.4 / 1.0 N4529.0 W07344.2/.....	
DCT -KZBW	FAWNS	221	*CLB	083 P06	263/009		33 886	23.0 / 3.4 N4459.6 W07405.4	07 00.07/.....	
DCT	BUGSY	201	*CLB	083 P03	253/008		16 870	22.5 / 3.9 N4443.4 W07408.5	02 00.09/.....	
DCT	*TOC	238	FL400	083 M01	248/021	489 470	26 844	21.8 / 4.5 N4424.7 W07433.9	03 00.12/.....	
DCT	SYR SYRACUSE	237	FL400	083 P00	117.00 243/028	491 465	104 740	20.6 / 5.8 N4309.6 W07612.3	13 00.25/.....	
DCT -KZNY	*BDRY	223	FL400	048 P02	248/033	492 466	42 698	20.1 / 6.3 N4233.8 W07641.7	05 00.30/.....	
	KIAD	223	FL400	048 P01	247/038		13 685	19.9 / 6.4 N4222.8 W07650.6	02 00.32/.....	
DCT	PSB PHILIPSBURG	222	FL400	050 P02	115.50 251/040	493 462	102 583	18.7 / 7.7 N4055.0 W07759.6	13 00.45/.....	
Q71 -KZOB	*BDRY	240	FL400	055 P02	251/040	493 460	7 576	18.6 / 7.8 N4050.2 W07806.9	01 00.46/.....	
Q71	PSYKO	240	FL400	055 P01	248/047	494 451	63 513	17.8 / 8.6 N4008.6 W07909.2	09 00.55/.....	
Q71	EMNEM	239	FL400	071 P01	247/049	493 446	57 456	17.1 / 9.3 N3931.5 W08004.5	07 01.02/.....	
Q71 -KZID	*BDRY	238	FL400	052 P01	246/051	493 445	30 426	16.7 / 9.7 N3911.7 W08033.2	04 01.06/.....	
Q71	GEFFS	237	FL400	052 P01	245/051	493 444	16 410	16.5 / 9.9 N3900.8 W08048.8	02 01.08/.....	
DCT	HVQ CHARLESTON	237	FL400	072 P00	117.40 243/047	492 446	60 350	15.7 / 10.6 N3821.0 W08146.2	09 01.17/.....	
DCT	HLRRY	207	FL400	070 P00	247/046	491 459	81 269	14.7 / 11.6 N3704.5 W08219.2	10 01.27/.....	
	KATL	212	FL400	086 P00	245/052		10 259	14.6 / 11.8 N3655.5 W08224.3	02 01.29/.....	
ONDRE1 -KZTL	*BDRY	212	FL400	086 M00	248/046	53 49	2 258	14.6 / 11.8 N3654.0 W08225.2	00 01.29/.....	

TCC909B CYUL-KATL (20-Aug-2022) #1

ONDRE1	ADEIN	212	FL400	086		491	43	14.1 / 12.3	05	01.34
				M01	250/048	457	215	N3615.0 W08247.0/.....	
ONDRE1	PUPDG	212	FL400	090		491	32	13.7 / 12.7	05	01.39
				M01	251/047	456	183	N3546.5 W08303.7/.....	
ONDRE1	ALADY	212	FL400	089		491	22	13.4 / 13.0	02	01.41
				M01	252/045	457	161	N3526.2 W08315.4/.....	
ONDRE1	WEALL	211	FL400	089		491	24	13.1 / 13.3	04	01.45
				M01	253/043	459	136	N3504.3 W08327.8/.....	
ONDRE1	*TOD	212	FL400	089		491	26	12.8 / 13.6	03	01.48
				M01	256/042	463	110	N3440.8 W08341.3/.....	
ONDRE1	KNOWW	211	*DES	078			3	12.8 / 13.6	00	01.48
				M00	257/042		107	N3438.0 W08342.9/.....	
ONDRE1	STRWY	211	*DES	078			20	12.7 / 13.6	03	01.51
				P09	253/035		87	N3419.8 W08353.3/.....	
ONDRE1	ONDRE	214	*DES	078			9	12.7 / 13.7	01	01.52
				P11	257/030		78	N3411.7 W08358.4/.....	
ONDRE1	SMELY	213	*DES	078			13	12.7 / 13.7	02	01.54
				P12	261/021		65	N3400.0 W08405.8/.....	
ONDRE1	GAASS	216	*DES	046			18	12.6 / 13.8	03	01.57
				P12	256/017		46	N3344.0 W08416.8/.....	
ONDRE1	KLOWD	276	*DES	046			8	12.6 / 13.8	01	01.58
				P11	255/017		39	N3344.0 W08426.1/.....	
ONDRE1	KUNFU	276	*DES	046			7	12.5 / 13.8	01	01.59
				P11	253/016		32	N3344.0 W08433.9/.....	
ONDRE1	TRAPE	275	*DES	046			8	12.5 / 13.9	02	02.01
				P11	248/015		25	N3344.0 W08443.0/.....	
ONDRE1	SNEVE	275	*DES	046			5	12.4 / 13.9	01	02.02
				P11	243/014		20	N3343.9 W08449.0/.....	
ONDRE1	KATL/08L	110	1026	046			20	12.1 / 14.3	08	02.10
	HARTSFIELD - JACKSON							N3339.0 W08426.3/.....	

TCC909B CYUL-KATL (20-Aug-2022) #1

WIND INFORMATION - OBS 20/AUG 00:00

(CLIMB) **SYR** **PSB** **PSYKO**
FL390 260/019 -59 FL440 245/038 -55 FL440 245/044 -56 FL440 244/047 -57
FL310 257/006 -43 FL420 245/033 -55 FL420 248/042 -55 FL420 246/047 -56
FL230 261/011 -22 FL400 244/028 -56 FL400 252/041 -54 FL400 248/047 -55
15000 258/012 -8 FL380 241/022 -56 FL380 255/039 -53 FL380 251/047 -54
7000 254/009 +8 FL360 233/016 -53 FL360 258/036 -51 FL360 256/045 -51

EMNEM **GEFFS** **HVQ** **(DESCENT)**
FL440 241/046 -57 FL440 241/047 -57 FL440 242/042 -58 FL390 261/042 -57
FL420 244/048 -56 FL420 243/049 -56 FL420 243/045 -57 FL310 253/037 -38
FL400 247/050 -56 FL400 245/052 -56 FL400 243/048 -56 FL230 265/025 -19
FL380 250/050 -54 FL380 248/052 -55 FL380 244/049 -55 15000 259/018 -3
FL360 253/047 -52 FL360 252/049 -52 FL360 247/045 -52 7000 249/013 +11

END FLIGHTPLAN 01237 TCC909B PJTGD CYUL-KATL 20AUG2022

TCC909B CYUL-KATL (20-Aug-2022) #1

[ATC FLIGHTPLAN]

(FPL-TCC909B-IS
-B77L/H-SDE1FGHIJ1J5M1RWXY/LB2
-CYUL1205
-N0491F400 DCT FAWNS DCT BUGSY DCT SYR DCT PSB Q71 GEFES DCT HVQ
DCT HLRRY ONDRE1
-KATL0210 KMEM
-PBN/A1B1C1D1L101S2 NAV/RNVD1E2A1 DOF/220820 REG/PJTGD
EET/KZBW0006 KZNY0030 KZOB0046 KZID0106 KZTL0129
SEL/EFAD CODE/484DC6 RVR/75 OPR/TRADEWIND CARIBBEAN
ORGN/TNCCTCAP PER/D
RMK/TCAS
-E/0416)

TCC909B CYUL-KATL (20-Aug-2022) #1

[PLANNING WEATHER]

ORIGIN: CYUL/YUL (PIERRE ELLIOTT TRUDEAU INTL, CANADA)

UTC -04:00

CYUL 200900Z 23004KT 15SM SKC 20/15 A3009 RMK SLP190 DENSITY ALT 600FT
CYUL 200840Z 2009/2106 23006KT P6SM SKC
BECMG 2014/2016 22010KT
BECMG 2022/2024 VRB03KT
FM210000 VRB03KT P6SM BKN080
RMK NXT FCST BY 201200Z

DESTINATION: KATL/ATL (HARTSFIELD - JACKSON ATLANTA I, UNITED STATE UTC -04:00)

KATL 200852Z 00000KT 7SM BKN004 BKN050 22/21 A3011 RMK A02 SLP188
T02220211 53000
KATL 200758Z 2008/2112 13003KT 4SM BR BKN004 BKN050
FM201500 21004KT P6SM VCSH SCT008 BKN015
FM201800 21005KT P6SM VCSH SCT020 BKN035
PROB30 2020/2102 VRB10G20KT 4SM TSRA BR BKN025CB

ALTERNATE: KMEM/MEM (MEMPHIS INTL, UNITED STATES)

UTC -05:00

KMEM 200854Z 17007KT 10SM SCT041 BKN055 OVC095 26/19 A3000 RMK A02 SLP152
T02560194 53002 \$
KMEM 200859Z 2009/2112 17007KT P6SM SCT040 BKN050 OVC090
FM201500 21006KT P6SM BKN040 BKN090
FM201900 22007KT P6SM VCSH BKN045 BKN080
FM210000 20004KT P6SM SCT050 BKN150

ADEQUATE: KIAD/IAD (WASHINGTON DULLES INTL, UNITED STATES)

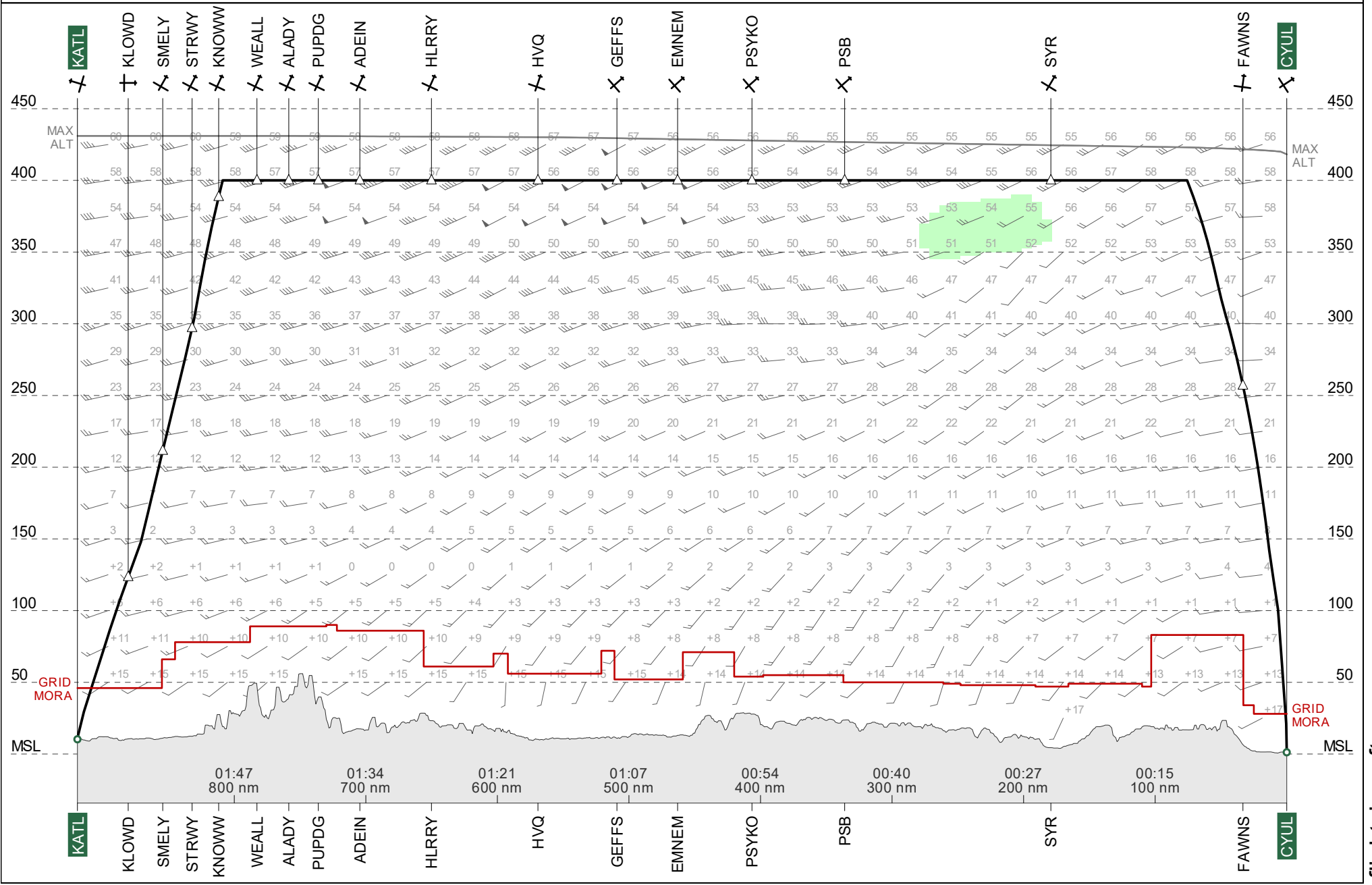
UTC -04:00

KIAD 200852Z 15004KT 10SM FEW160 SCT250 20/19 A3012 RMK A02 SLP197
T02000189 58001
KIAD 200859Z 2009/2112 15004KT P6SM FEW160 SCT250
FM201500 16005KT P6SM FEW250
FM210400 00000KT P6SM SCT060
FM210600 00000KT P6SM BKN025
FM210900 00000KT 6SM BR BKN015

TR909B #1

KATL ← — CYUL

ETD 20 Aug 12:05z
PJTGD B77L



Route Chart

TR909B #1
CYUL-KATL

20 Aug 2022
PJTGD B77L

Lambert Conical Projection
Standard Parallels: 38N and 42N



Wind Chart

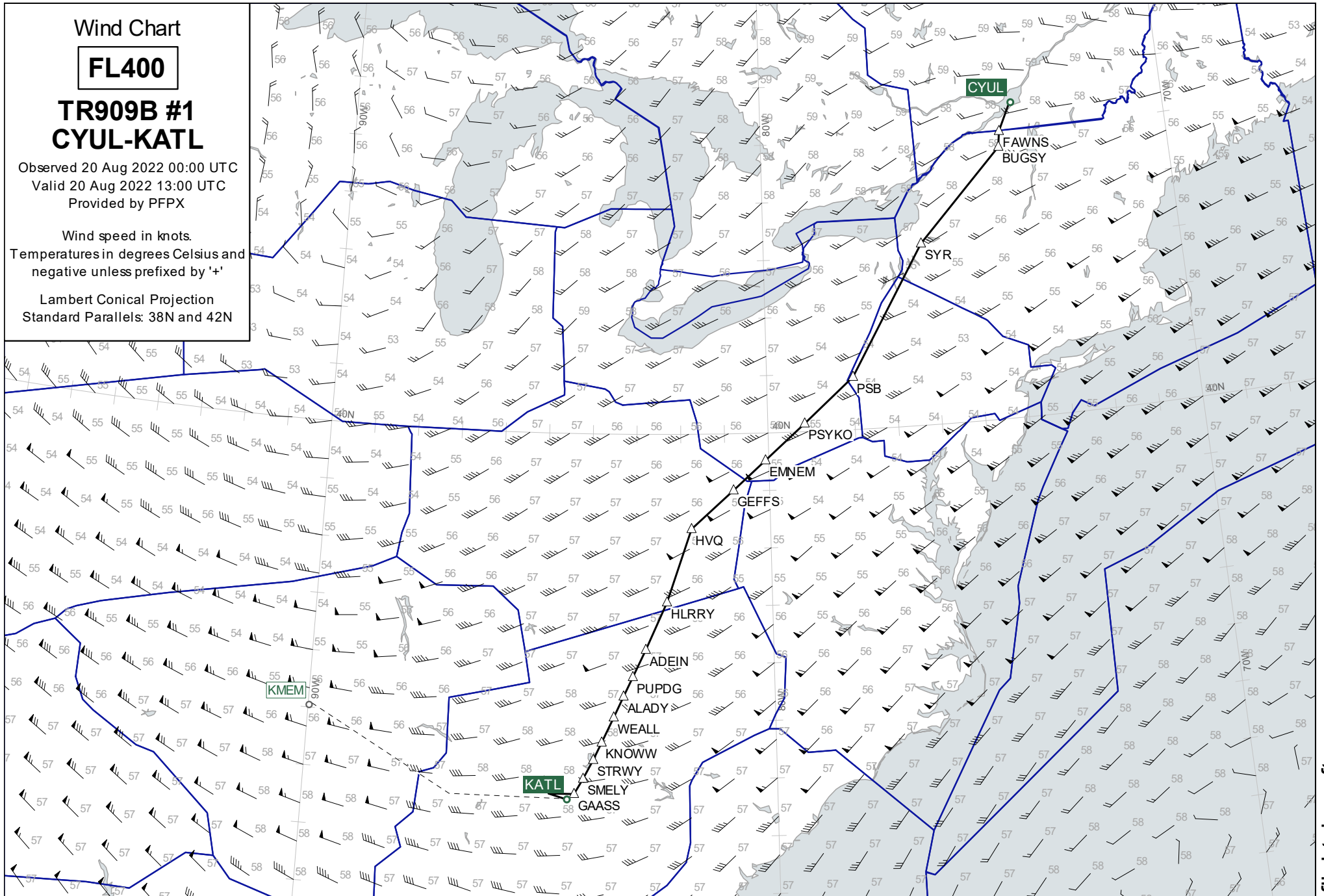
FL400

**TR909B #1
CYUL-KATL**

Observed 20 Aug 2022 00:00 UTC
Valid 20 Aug 2022 13:00 UTC
Provided by PFPX

Wind speed in knots.
Temperatures in degrees Celsius and
negative unless prefixed by '+'

Lambert Conical Projection
Standard Parallels: 38N and 42N



Wind Chart

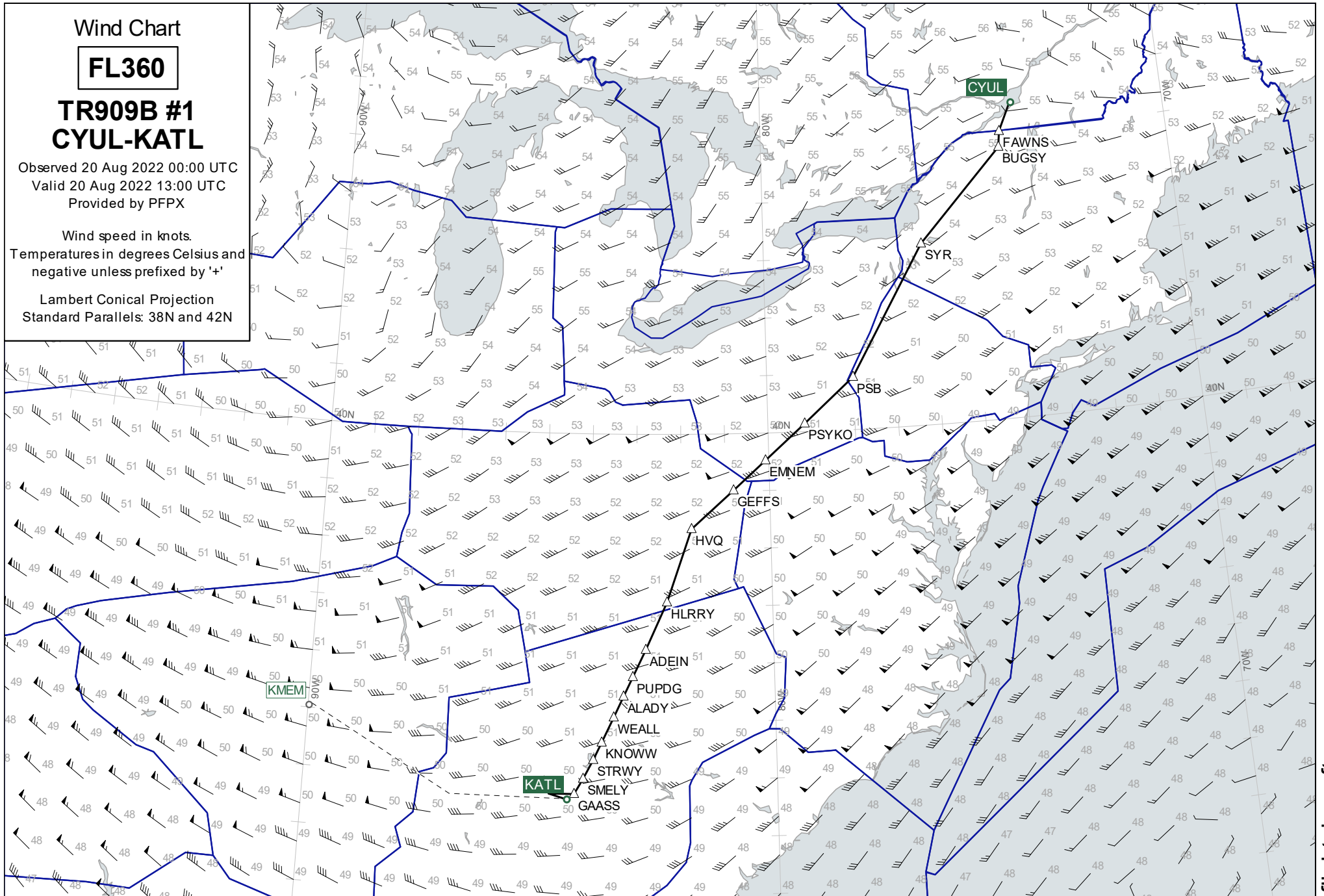
FL360

TR909B #1 CYUL-KATL

Observed 20 Aug 2022 00:00 UTC
Valid 20 Aug 2022 13:00 UTC
Provided by PFPX

Wind speed in knots.
Temperatures in degrees Celsius and
negative unless prefixed by '+'

Lambert Conical Projection
Standard Parallels: 38N and 42N



Wind Chart

FL440

**TR909B #1
CYUL-KATL**

Observed 20 Aug 2022 00:00 UTC
Valid 20 Aug 2022 13:00 UTC
Provided by PFPX

Wind speed in knots.
Temperatures in degrees Celsius and
negative unless prefixed by '+'

Lambert Conical Projection
Standard Parallels: 38N and 42N

