



Flight Briefing Package

TCC904D KMSP-CYVR

13-Apr-2024 #1

RELEASE #1

MINNEAPOLIS-ST PAUL INTL/WOLD-
(UNITED STATES)

-

VANCOUVER INTL
(CANADA)

PREPARED BY CHRISTIAN BREUER (TCA2984)

CHRISTIAN@TCA-CHARTER.DE

13 APR 1112 UTC

TCC904D KMSP-CYVR (13-Apr-2024) #1

AIR CARAIBES ATLANTIQUE FLIGHTPLAN - IFR TCC904D FNPTP KMSP-CYVR

 ALL WEIGHTS IN KILOGRAMS (KG) STD 13APR/1225Z

OPF 1 - PREPARED 13APR/1112Z BY CHRISTIAN BREUER (TCA2984) CHRISTIAN@TCA-CHARTER.DE

TR904D/TCC904D FNPTP/B789-TR1000K ROUTE: KMSCPYVR01

DEP: KMSP/MSP 17 ELEV 842 FT COST INDEX: 25 TTL G/C DIST: 1244 NM
 ARR: CYVR/YVR 26R ELEV 13 FT INIT ALT: FL430 TTL F/P DIST: 1289 NM
FUEL BIAS: 100.0% TTL AIR DIST: 1388 NM
AVG WIND CMP: HD033 KT

ALT: KSEA/SEA 34R ELEV 432 FT 133 NM

CONFIG	DOW	PAX	CARGO	TOTAL	ULOAD LIM		ZFW	TOW	LDW
STANDARD	128061	0	1	1	53375 ZFW		MAX 181437	253208	192777
							PLN 128062	148172	135329
							ACT

	FUEL	CORR	ENDUR	
TRIP	12843	03:01	
CONT 5%	642	00:10	
ALTN KSEA	2190	00:29	
FINAL RESV	1888	00:30	
HOLD	1273	00:20	
ADD FUEL	319	00:05	
MIN T/O	19155	04:36
EXTRA	955	00:15	CAPTAINS SIGNATURE (....)
TAXI	360	00:15	
RELEASE	20470	05:06	I ACCEPT THIS OPF AND I AM FAMILIAR
ARR FUEL	7027	01:40	WITH THE PLANNED ROUTE AND AERODROMES

FUEL TANK CAP 101456 KG / MAX EXTRA FUEL 58403 KG LIM BY LDW
 TRIP CORR FOR 4000 KG TOW INCR: +249 KG / 4000 KG TOW DECR: -228 KG
 2000 FT LOWER: +183 KG / EET 03:05 CLB: 250/310/85 DES: 85/310/250

KMSP	STD 12:25Z/07:25L	ETD 12:25Z	ACT OFBL	EST T/O 12:40Z	ACT T/O
CYVR	STA 16:10Z/09:10L	ETA 15:51Z	ACT ONBL	EST LDG 15:41Z	ACT LDG
	SKD 03:45	PLN 03:26	TTL BLCK	EST FLT 03:01	TTL FLT

ATC ROUTE: N0486F430 SMERF7 SMERF DCT KP09A DCT KU12W DCT COKEE DCT MLP J136
 GEG DCT METOW GRIZZ7

ALTERNATE PLANNING

ALTN/RWY	DIST	ALT/FL	MSA	COMP	TIME	FUEL	DIFF	ROUTE
KSEA/34R	133	15000	113	HD003	00:29	2190	-	YVR MARNR7

MOST CRITICAL MORA 13000 FT AT ILSAA

AWY	WAYPOINT	MT	ALT	MSA	FREQ	TAS	LEG	FUEL REM / USED	LEG	ACC
-FIR	NAME		ISA	WND/SPD	GS	REM	POSITION	ETO / ATO		
	KMSP/17		842	036				20.1 / 0.4		
	MINNEAPOLIS-ST PAUL					1289	N4453.3 W09314.5/.....		

TCC904D KMSPP-CYVR (13-Apr-2024) #1

SMERF7	ZOGAP	295	*CLB 036	32	18.5 / 2.0	07	00.07
			P01 298/052	1257	N4505.3 W09352.6/.....	
SMERF7	PAGOZ	289	*CLB 036	18	18.0 / 2.5	02	00.09
			M03 296/054	1239	N4511.3 W09417.3/.....	
SMERF7	*TOC	288	FL430 037	486 59	17.0 / 3.5	08	00.17
			P01 283/048	436 1180	N4529.8 W09536.5/.....	
SMERF7	SMERF	286	FL430 047	486 86	16.2 / 4.3	12	00.29
			P01 279/047	439 1094	N4555.3 W09734.1/.....	
DCT	KP09A	287	FL430 047	487 107	15.2 / 5.2	15	00.44
			P01 276/047	440 987	N4630.0 W10000.0/.....	
	KBIL	277	FL430 046	61	14.7 / 5.8	08	00.52
			P01 283/045	926	N4641.9 W10127.1/.....	
DCT	*BDRY	275	FL430 059	487 72	14.0 / 6.5	10	01.02
-KZLC			P01 267/045	441 854	N4654.5 W10310.1/.....	
DCT	KU12W	273	FL430 059	486 35	13.7 / 6.8	05	01.07
			P01 266/044	442 820	N4700.0 W10400.0/.....	
DCT	COKEE	274	FL430 059	486 119	12.6 / 7.8	16	01.23
			P01 269/043	443 701	N4722.4 W10651.8/.....	
DCT	*BDRY	265	FL430 120	482 331	9.7 / 10.7	44	02.07
-KZSE			M02 259/026	454 370	N4728.4 W11500.3/.....	
DCT	MLP	255	FL430 099	117.80 482 26	9.5 / 11.0	03	02.10
	MULLAN PASS		M02 256/024	457 343	N4727.4 W11538.8/.....	
	CYVR	262	FL430 099	17	9.4 / 11.1	03	02.13
			M02 241/023	326	N4729.0 W11603.8/.....	
J136	HILIE	262	FL430 092	481 26	9.2 / 11.3	03	02.16
			M02 253/021	460 301	N4731.1 W11641.4/.....	
J136	GEG	261	FL430 092	115.50 481 38	8.8 / 11.6	05	02.21
	SPOKANE		M02 249/018	463 263	N4733.9 W11737.6/.....	
DCT	METOW	276	FL430 122	479 107	8.0 / 12.5	14	02.35
			M02 249/009	472 155	N4808.0 W12009.0/.....	
GRIZZ7	*TOD	270	FL430 130	479 41	7.6 / 12.8	05	02.40
			M02 253/008	472 115	N4818.2 W12107.9/.....	
GRIZZ7	ILSAA	269	*DES 130	24	7.6 / 12.9	03	02.43
			M02 234/015	91	N4824.0 W12142.9/.....	
GRIZZ7	PIZZE	291	*DES 130	20	7.6 / 12.9	02	02.45
			M00 243/021	71	N4835.7 W12207.3/.....	
GRIZZ7	EGRET	280	*DES 094	17	7.6 / 12.9	03	02.48
			P03 256/021	54	N4842.7 W12230.6/.....	

TCC904D KMSP-CYVR (13-Apr-2024) #1

GRIZZ7	GOVAV	293	*DES 094	21	7.5 / 13.0	03	02.51
			P01 236/009	33	N4855.3 W12255.1/.....	
GRIZZ7	OVBIN	293	*DES 094	4	7.5 / 13.0	01	02.52
	-CZVR		P00 225/007	29	N4857.8 W12300.2/.....	
GRIZZ7	*BDRY	347	*DES 113	2	7.5 / 13.0	01	02.53
			M00 223/006	27	N4900.0 W12300.1/.....	
GRIZZ7	KEPGI	347	*DES 115	4	7.5 / 13.0	01	02.54
			M02 218/003	23	N4904.5 W12259.9/.....	
GRIZZ7	PMSU	076	*DES 115	7	7.4 / 13.0	01	02.55
			M04 135/000	16	N4904.3 W12249.8/.....	
GRIZZ7	CYVR/26R	286	13 115	16	7.3 / 13.2	06	03.01
	VANCOUVER INTL				N4912.0 W12309.6/.....	

TCC904D KMSB-CYVR (13-Apr-2024) #1

WIND INFORMATION - OBS 13/APR 06:00

(CLIMB) **KP09A** **KU12W** **COKEE**
FL420 288/051 -56 FL470 277/041 -53 FL470 266/038 -54 FL470 268/036 -54
FL330 291/050 -53 FL450 277/044 -53 FL450 266/042 -54 FL450 268/039 -55
FL250 296/052 -35 FL430 277/047 -55 FL430 267/044 -56 FL430 270/043 -56
16000 290/042 -14 FL410 277/051 -58 FL410 269/046 -58 FL410 271/047 -58
8000 260/026 +2 FL390 277/054 -61 FL390 270/049 -61 FL390 272/052 -60

MLP **GEG** **(DESCENT)**
FL470 252/023 -56 FL470 249/019 -57 FL420 279/014 -59
FL450 254/023 -57 FL450 251/018 -57 FL330 262/018 -52
FL430 256/024 -58 FL430 250/018 -58 FL250 253/019 -34
FL410 258/026 -59 FL410 248/019 -59 16000 270/021 -14
FL390 259/029 -60 FL390 246/019 -61 8000 241/005 -3

END FLIGHTPLAN 01943 TCC904D FNPTP KMSB-CYVR 13APR2024

TCC904D K MSP-CYVR (13-Apr-2024) #1

[ATC FLIGHTPLAN]

(FPL-TCC904D-IS

-B789/H-SADE1GHIJ2J3J4J5RWXYZ/LB2D1

-KMSP1225

-N0486F430 SMERF7 SMERF DCT KP09A DCT KU12W DCT COKEE DCT MLP

J136 GEG DCT METOW GRIZZ7

-CYVR0301 KSEA

-PBN/A1B1C1D1L101S1 NAV/RNVD0E0A0 DOF/240413 REG/FNPTP

EET/KZLC0102 KZSE0207 CZVR0253 RVR/75 OPR/AIR CARAIBES

ATLANTIQUE PER/D

RMK/TCAS

-E/0451)

TCC904D KMSPP-CYVR (13-Apr-2024) #1

[PLANNING WEATHER]

ORIGIN: KMSPP/MSP (MINNEAPOLIS-ST PAUL INTL/WOLD-, UNITED STATES) UTC -05:00

KMSPP 130953Z 09003KT 10SM CLR 06/02 A3004 RMK A02 SLP174 T00610017
KMSPP 130832Z 1309/1412 25004KT P6SM SKC
FM131400 16007KT P6SM SKC
FM131900 21015G25KT P6SM FEW150
FM140000 22008KT P6SM SCT250

DESTINATION: CYVR/YVR (VANCOUVER INTL, CANADA) UTC -07:00

CYVR 131000Z 30015G21KT 15SM SKC 08/07 A2991 RMK SLP131
CYVR 130840Z 1309/1412 30015KT P6SM SKC
FM131200 30010KT P6SM FEW006
FM131700 30015KT P6SM SKC
BECMG 1405/1407 30008KT
RMK NXT FCST BY 131200Z

ALTERNATE: KSEA/SEA (SEATTLE-TACOMA INTL, UNITED STATES) UTC -07:00

KSEA 130953Z 02003KT 10SM CLR 07/03 A2989 RMK A02 SLP129 T00670033
KSEA 130859Z 1309/1412 01005KT P6SM SCT200
FM131800 35012KT P6SM SCT200
FM140600 03006KT P6SM SCT200

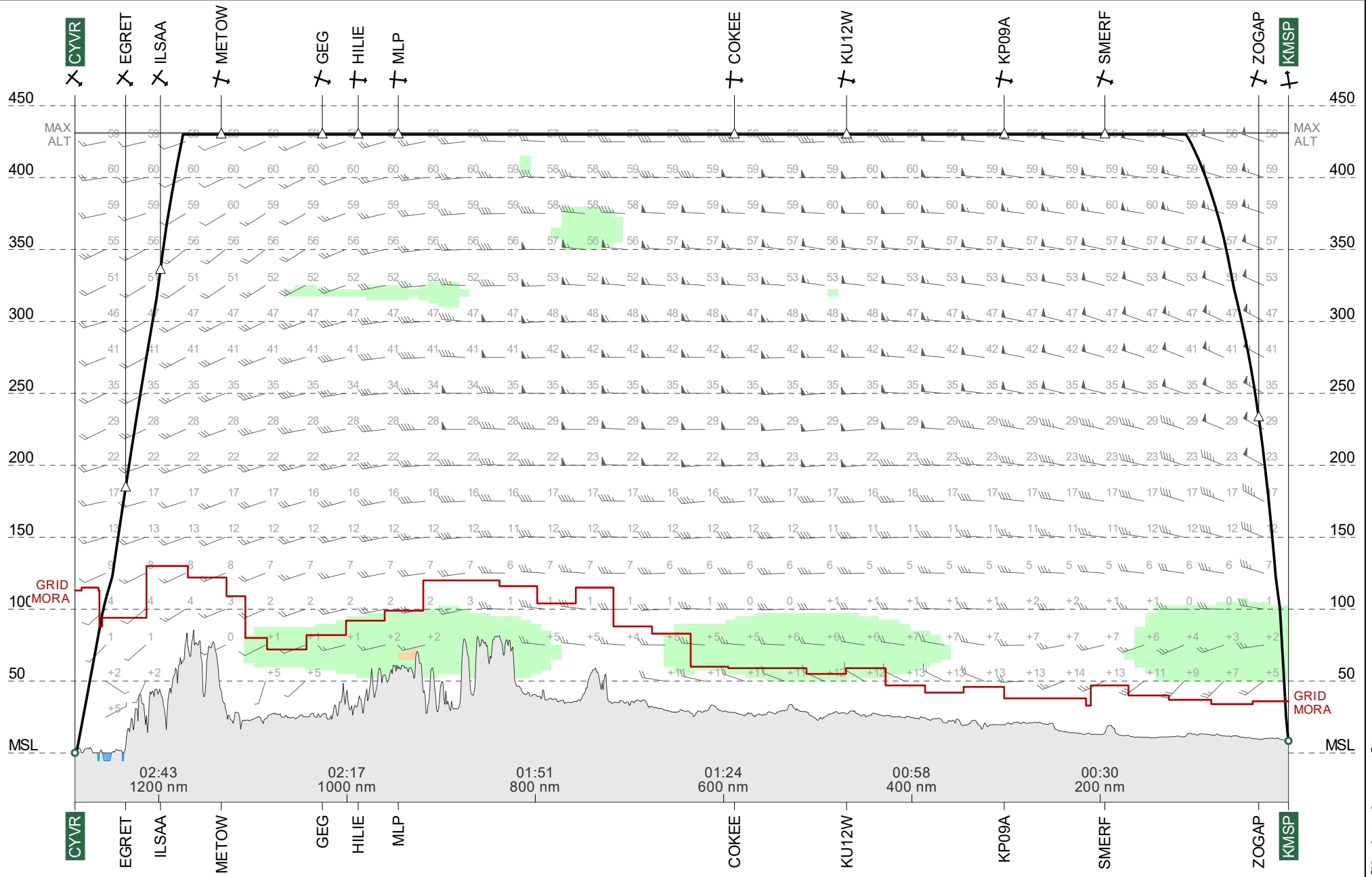
ADEQUATE: KBIL/BIL (BILLINGS LOGAN INTL, UNITED STATES) UTC -06:00

KBIL 130953Z 25009KT 10SM SCT095 BKN120 15/01 A2979 RMK A02 SLP061
T01500006
KBIL 130535Z 1306/1406 24009KT P6SM FEW150 SCT250
FM131700 32011KT P6SM FEW150 FEW250
FM140000 VRB06KT P6SM VCSH FEW150 FEW250

TR904D #1

CYVR ← — KMSP

ETD 13 Apr 12:25z
FNPTP B789

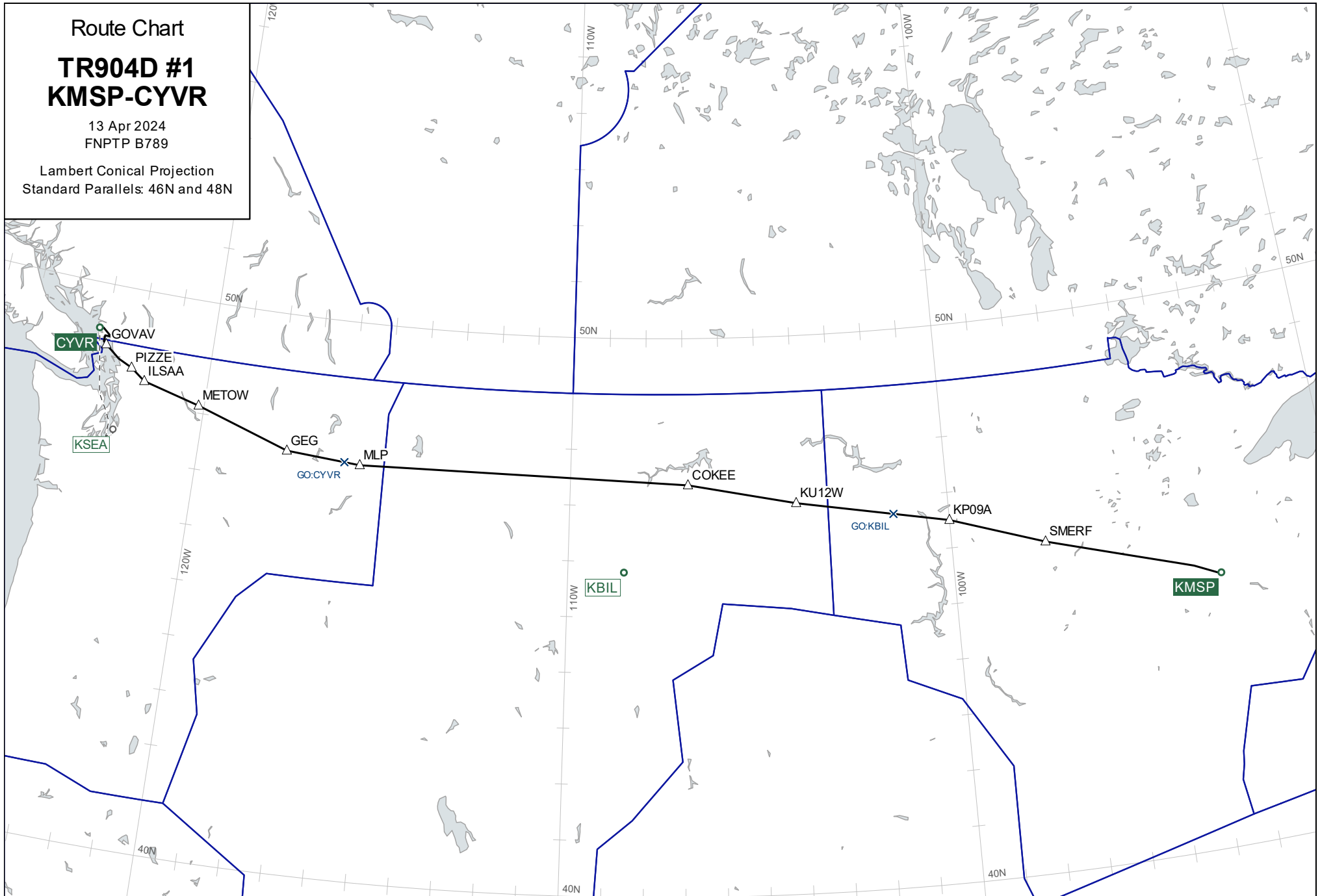


Route Chart

TR904D #1
KMSP-CYVR

13 Apr 2024
FNPTP B789

Lambert Conical Projection
Standard Parallels: 46N and 48N



Wind Chart

FL430

**TR904D #1
KMSB-CYVR**

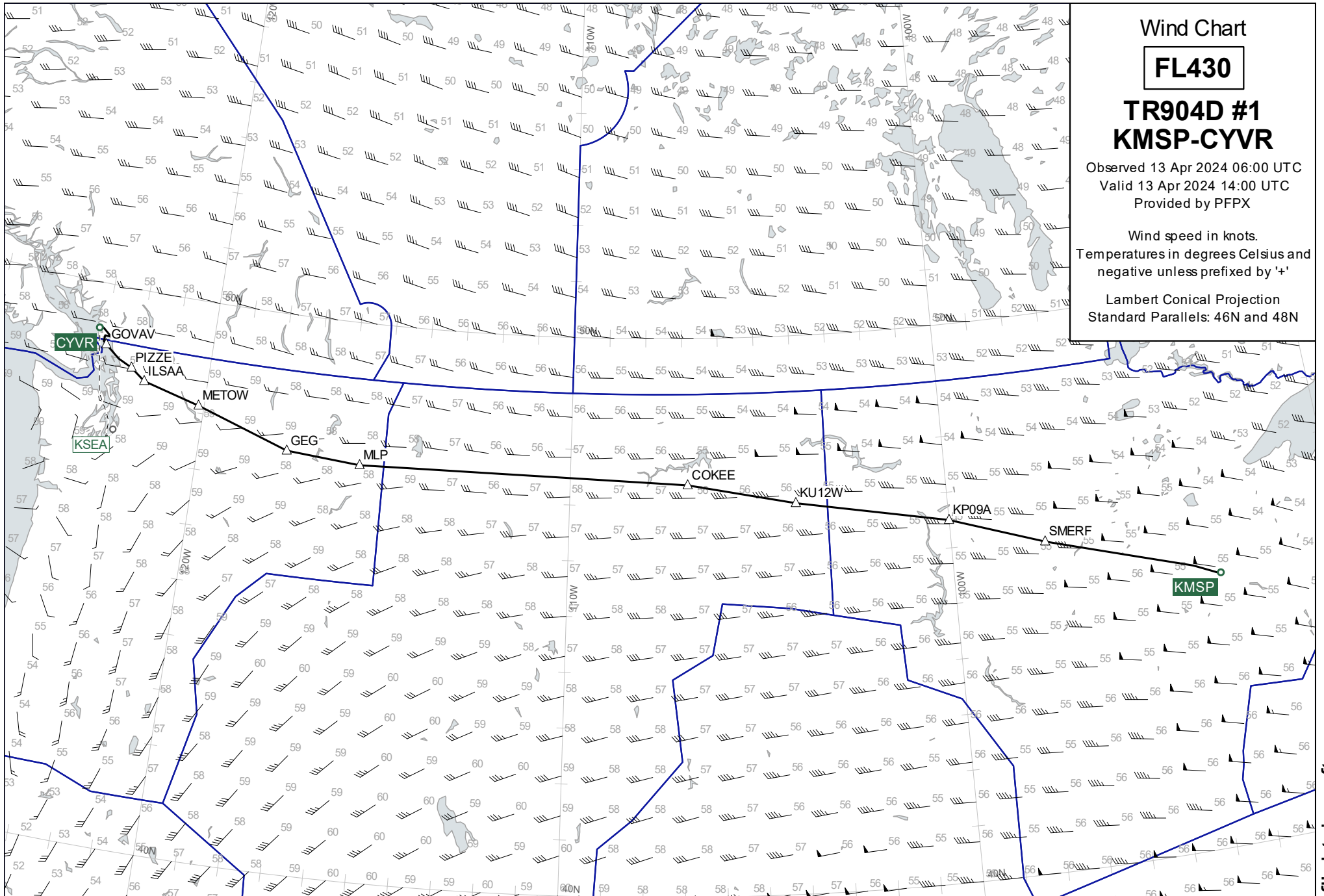
Observed 13 Apr 2024 06:00 UTC

Valid 13 Apr 2024 14:00 UTC

Provided by PFPX

Wind speed in knots.
Temperatures in degrees Celsius and
negative unless prefixed by '+'

Lambert Conical Projection
Standard Parallels: 46N and 48N



Wind Chart

FL390

**TR904D #1
KMSB-CYVR**

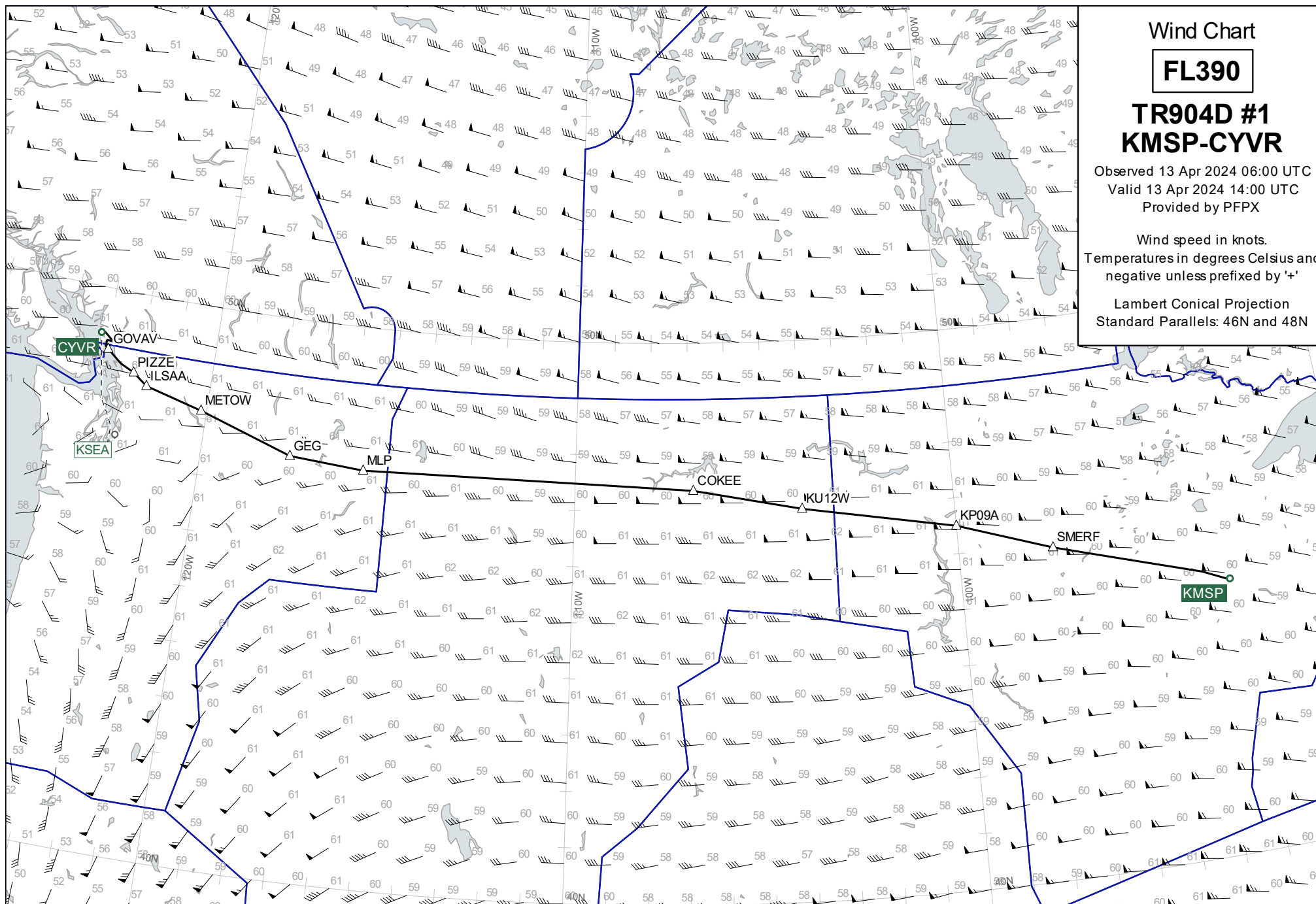
Observed 13 Apr 2024 06:00 UTC

Valid 13 Apr 2024 14:00 UTC

Provided by PFPX

Wind speed in knots.
Temperatures in degrees Celsius and
negative unless prefixed by '+'

Lambert Conical Projection
Standard Parallels: 46N and 48N



Wind Chart

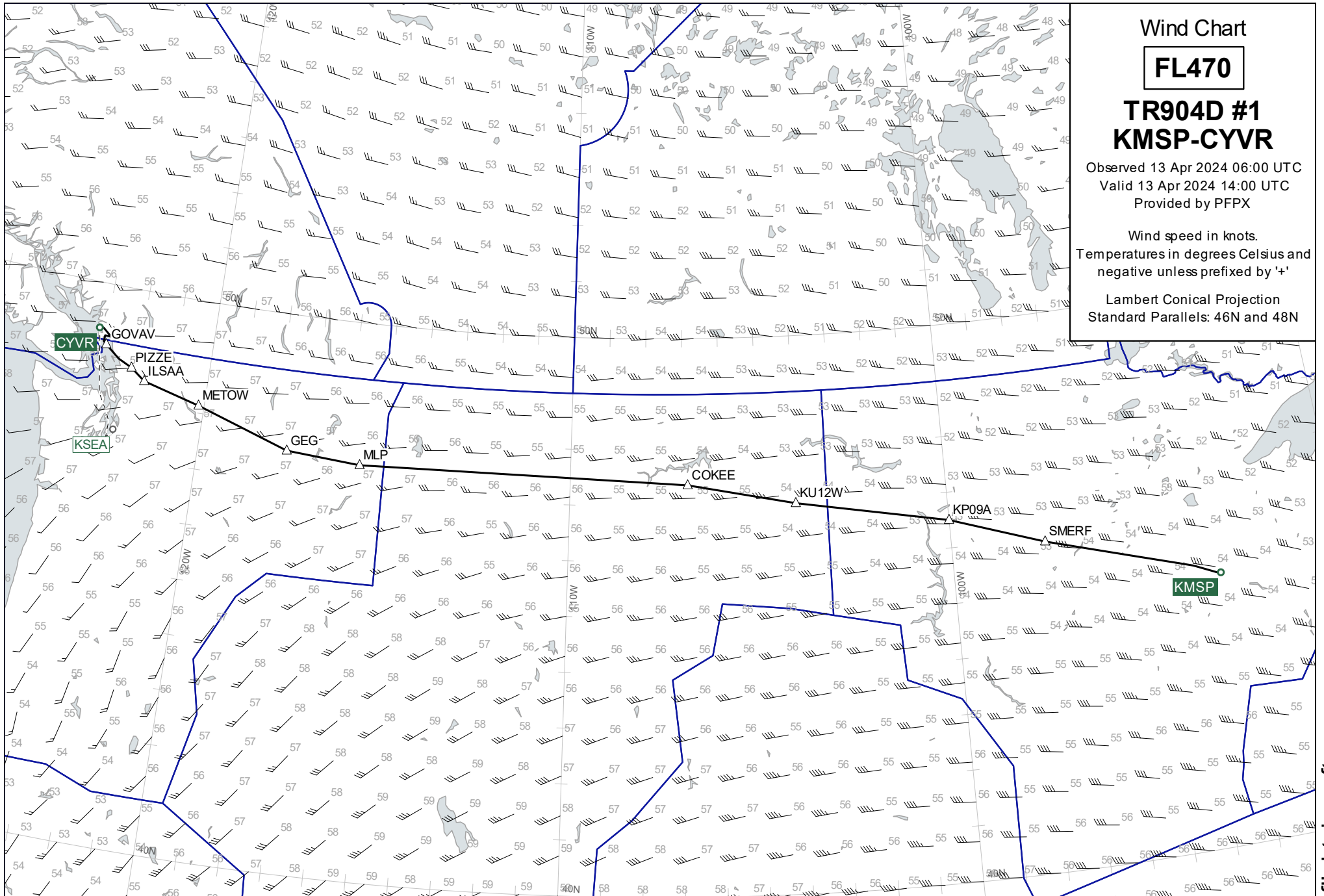
FL470

**TR904D #1
KMSP-CYVR**

Observed 13 Apr 2024 06:00 UTC
Valid 13 Apr 2024 14:00 UTC
Provided by PFPX

Wind speed in knots.
Temperatures in degrees Celsius and
negative unless prefixed by '+'

Lambert Conical Projection
Standard Parallels: 46N and 48N



Destination Area

15000

TR904D #1
KMSP-CYVR

Observed 13 Apr 2024 06:00 UTC
Valid 13 Apr 2024 16:00 UTC
Provided by PFPX

Wind speed in knots.
Temperatures in degrees Celsius and
negative unless prefixed by '+'

Lambert Conical Projection
Standard Parallels: 48N and 49N

